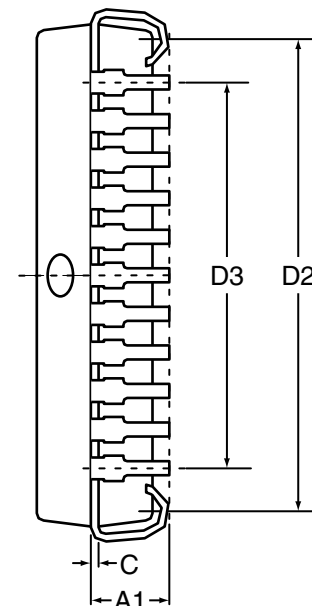
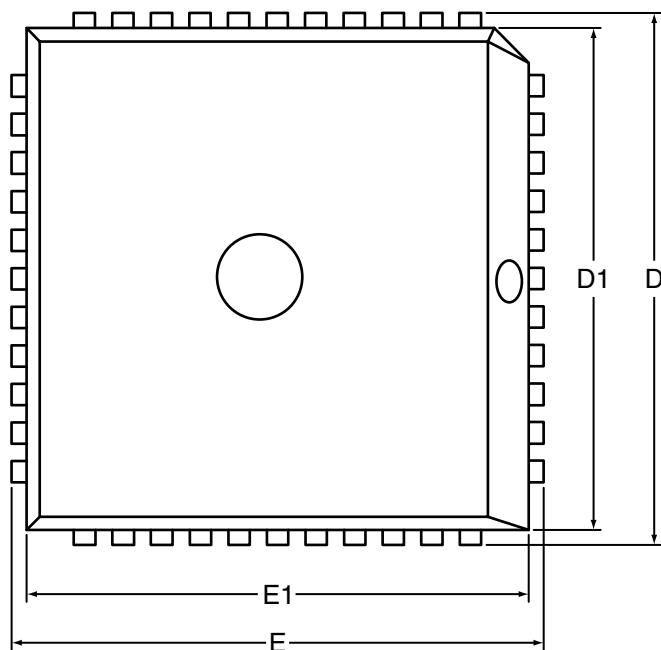


PACKAGING INFORMATION

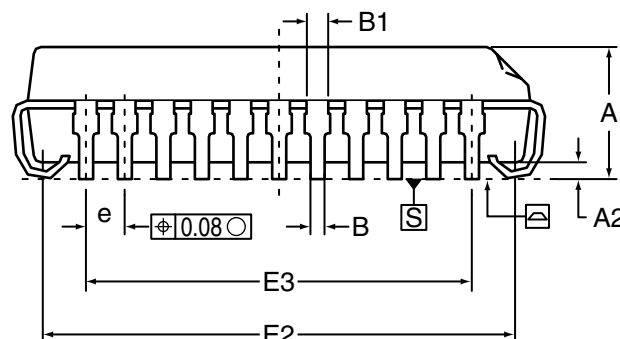


PLCC (Plastic Leaded Chip Carrier)
Package Code: PL



Plastic Leaded Chip Carrier

SYMBOL	MIN.	MM NOM.	MAX.	MIN.	INCH NOM.	MAX.
No. Leads		44			44	
A	—	—	4.572	—	—	0.180
A1	2.515	2.667	2.819	0.100	0.105	0.110
A2	0.508	—	—	0.02	—	—
B	0.330	0.457	0.533	0.013	0.018	0.021
B1	0.660	0.711	0.813	0.026	0.028	0.032
D	17.399	17.526	17.653	0.685	0.690	0.695
D1	16.510	16.586	16.662	0.650	0.653	0.656
D2	15.113	15.494	15.875	0.594	0.609	0.624
D3	—	12.7	—	—	0.5	—
E	17.399	17.526	17.653	0.685	0.690	0.695
E1	16.510	16.586	16.662	0.650	0.653	0.656
E2	15.113	15.494	15.875	0.594	0.609	0.624
E3	—	12.7	—	—	0.5	—
e	1.143	1.27	1.397	0.045	0.05	0.055
C	—	0.254	—	—	0.010	—



Integrated Silicon Solution, Inc.

2231 Lawson Lane
Santa Clara, CA 95054
Tel: 1-800-379-4774
Fax: (408) 588-0806
E-mail: sales@issi.com
www.issi.com